

# Meyer Winter Products

Ploughs and Spreaders for private and small business owners in Europe



[www.aebi-schmidt.com](http://www.aebi-schmidt.com)

 **meyer**  
a brand of aebi schmidt





## Meyer winter products get the job done

Everybody's expectations are high. Your customers. Your drivers. Your community. Whenever and wherever the snow falls, immediate response is your job. How do you get it done? With dedication, grit, determination, and Meyer. Based on its American heritage, Meyer engineers a powerful selection of contractor-grade snow and ice control equipment built to the highest standards in the industry. Yours. Nobody is more dedicated to getting it done than you. And nobody is more dedicated to make sure you have what it takes than Meyer.



### Table of Contents

#### Snow ploughs

- P.3 Drive Pro™ Quick Link™
- P.4 Drive Pro™ Single-Pull Pin
- P.5 Lot Pro™ LD
- P.6 Lot Pro™

#### Spreaders

- P.7 Hotshot™ 70HD and 100HD
- P.8 Base Line 240 and 400
- P.9 Blaster® 350S and 750RS
- P.10 Crossfire™ 6 and 8



## Drive Pro™ Quick Link™

### Easy from every angle

The Drive Pro Quick Link plough system **connects using a 5 cm front receiver mount** so you can attach or detach the plough in minutes. The **pistol grip controller provides in-cab control** of the up/down and right/left motion of the blade while the **integrated caster wheels make it easy to manoeuvre** and store the moldboard. The crank stand allows for easy adjustment of the plough on uneven ground. **Engineered using lightweight military-grade steel, this means less wear and tear on your vehicle** and results in **better fuel efficiency**.

#### Other features:

- Pistol-grip controller with self-diagnostics and Hands-Free Ploughing
- Hydraulic system with a custom-moulded cover and adjustable drop speed
- Two-piece plug for quick connecting/disconnecting
- Tubular steel for added strength
- Optional Nite Saber III lights
- Override Safety System



#### Drive Pro Quick Link Standard Operating System Specifications

Model	DP 6.8PA	DP 7.6PA
Mounting Type	5 cm Receiver	5 cm Receiver
Moldboard Length	203 cm	229 cm
Moldboard Height	57 cm	57 cm
Moldboard Gauge	14 Steel	14 Steel
Vertical Ribs	8	8
Plough Trip Springs	2	2
Cutting Edge	0,95 cm x 15,24 cm	0,95 cm x 15,24 cm
Average Width at Full Angle	183 cm	206 cm
Angling Rams	3,81 cm x 25,4 cm	3,81 cm x 25,4 cm
Weight* Complete	166,3 kg	181,5 kg

\* Weight without mount and clevis



# Drive Pro™ Single-Pull Pin Ploughs

## Clear driveways start here

As utility vehicle manufacturers keep offering lighter-weight models, Meyer has developed a rugged snow plough **made of lightweight high-strength steel**. The Drive Pro offers commercial-grade plough construction and performance that's perfect for driveways and other tight spaces. It offers features like **field-adjustable trip springs** and, depending on the vehicle type, **an easy-on/easy-off single-pull pin Drive Pro mount or EZ-Plus mount**. Both mounts leave the vehicle with a showroom appearance when not ploughing.

### Other features:

- Pistol grip controller with self-diagnostics and Hands-Free Ploughing
- Hydraulic system with a custom-moulded cover and adjustable drop speed
- Two-piece plug for quick connecting/disconnecting
- Tubular steel for added strength
- Optional Nite Saber III lights
- Override Safety System



### Drive Pro Single-Pull Pin EZ-Plus Mount Specifications

Model	DP-6.8	DP-7.6
Moldboard Length	203 cm	229 cm
Moldboard Height	57,15 cm	57,15 cm
Moldboard Gauge	14 Steel	14 Steel
Vertical Ribs	8	8
Plough Trip Springs	2	2
Cutting Edge	0,95 cm x 15,24 cm	0,95 cm x 15,24 cm
Average Width at Full Angle	183 cm	206 cm
Angling Rams	3,81 cm x 25,4 cm	3,81 cm x 25,4 cm
Weight* Complete	165,6 kg	179,2 kg

\* Weight without mount and clevis

### Drive Pro Single-Pull Pin Drive Pro Mount Specifications

Model	DP-6.0	DP-6.8	DP-7.6
Moldboard Length	183 cm	203 cm	229 cm
Moldboard Height	57,15 cm	57,15 cm	57,15 cm
Moldboard Gauge	14 Steel	14 Steel	14 Steel
Vertical Ribs	8	8	8
Plough Trip Springs	2	2	2
Cutting Edge	0,63 cm x 15,24 cm	0,95 cm x 15,24 cm	0,95 cm x 15,24 cm
Average Width at Full Angle	165 cm	183 cm	206 cm
Angling Rams	3,81 cm x 25,4 cm	3,81 cm x 25,4 cm	3,81 cm x 25,4 cm
Weight* Complete	154,2 kg	165,6 kg	179,2 kg

\* Weight without mount and clevis





## Lot Pro™ LD

### Be fully armed with a utility vehicle

The Lot Pro LD gives contractors a powerful tool to provide superior service to their customers. **It's engineered specifically for utility vehicles.** Combining lightweight materials and commercial-grade toughness, the Lot Pro LD can handle long driveways and narrow streets easily. With a **71 cm tall steel moldboard and 75-degree attack angle**, it clears snow fast, plus it offers outstanding back dragging performance thanks to its **heavy-duty rams**.

#### Other features:

- Pistol grip controller with self-diagnostics and Hands-Free Ploughing
- Hydraulic system with a custom-moulded cover and adjustable drop speed
- Two-piece plug for quick connecting/disconnecting
- Tubular steel for added strength
- Optional Nite Saber III lights
- Override Safety System

#### Lot Pro Light Duty Standard Operating System Specifications

Model	LPLD-7.6
Mounting Type	Plus
Moldboard Length	229 cm
Moldboard Height	71 cm
Moldboard Gauge	14 Steel
Vertical Ribs	6
Plough Trip Springs	2
Cutting Edge	0,95 cm x 15,24 cm
Average Width at Full Angle	205 cm
Angling Rams	3,81 cm x 25,4 cm
Weight* Complete	276,7 kg

\* Average mount weight is 57 kg





## Lot Pro™

### More rugged, by a lot

The Lot Pro gives you a rugged partner to clear large areas like car parks whenever your customers call. Made with highway plough type “black iron”, the Lot Pro is perfect for utility vehicles. With a steel **moldboard that stands 81 cm tall**, and **75-degree attack angle** that gives superior back-dragging performance, it gets the job done fast. Plus, the Lot Pro features **optional all-steel multi-position wings** that give you the ability to choose the best configuration for the job – box, scoop or straight plough – by pulling a single pin.

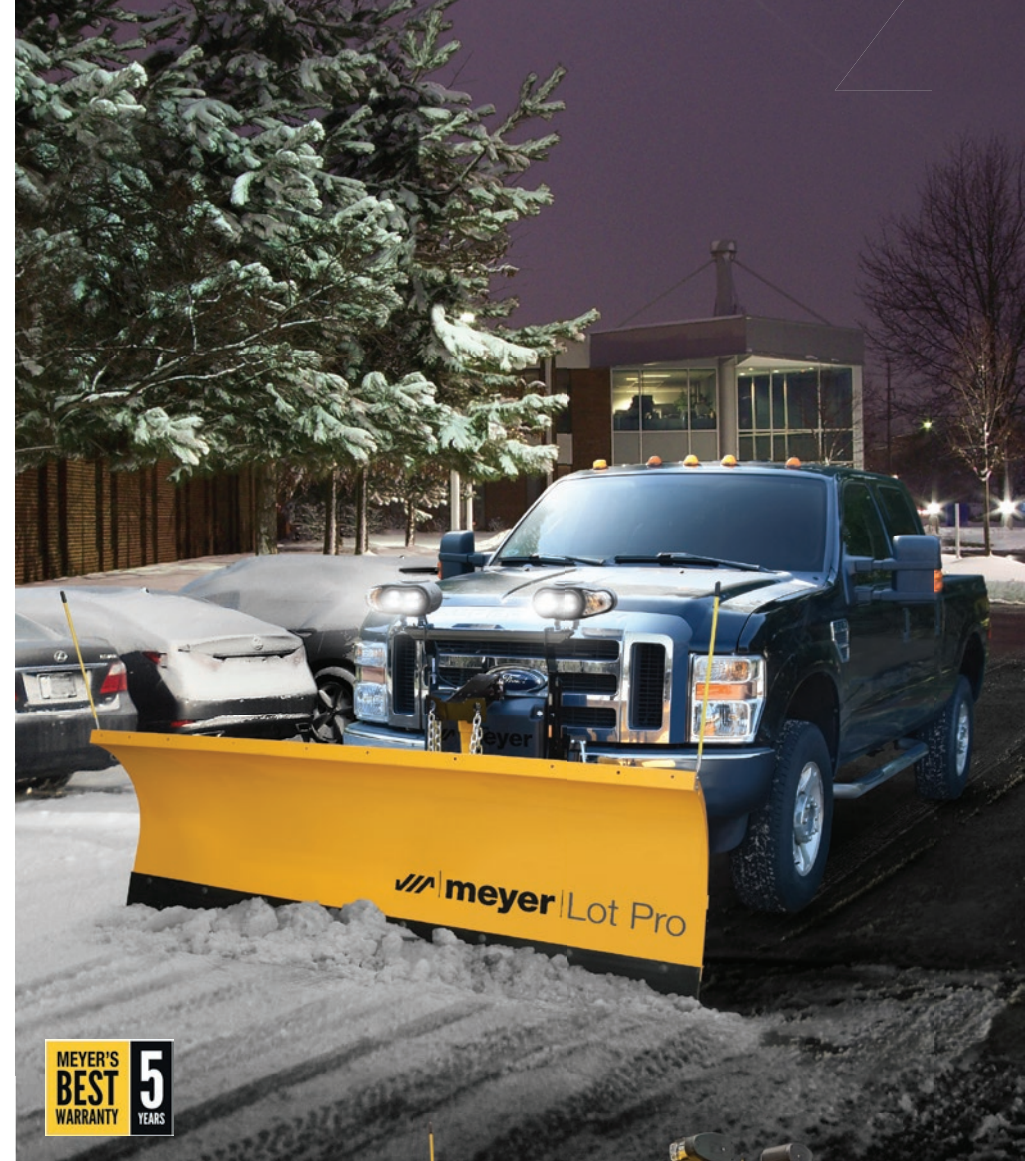
#### Other features:

- Tallest moldboards with the most aggressive attack angle in contractor-grade plough
- Pistol grip controller with self-diagnostics and Hands-Free Ploughing
- Hydraulic system with a custom-moulded cover and adjustable drop speed
- Two-piece plug for quick connecting/disconnecting
- Tubular steel for added strength
- Optional Nite Saber III lights
- Override Safety System

#### Lot Pro Standard Operating System Specifications

Model	LP-7.6	LP-8.0
Mounting Type	Plus	Plus
Moldboard Length	229 cm	243 cm
Moldboard Height	81 cm	81 cm
Moldboard Gauge	12 Steel	12 Steel
Vertical Ribs	6	6
Plough Trip Springs	4	4
Cutting Edge	1,27 cm x 15,24 cm	1,27 cm x 15,24 cm
Average Width at Full Angle	205 cm	218 cm
Angling Rams	3,81 cm x 25,4 cm	3,81 cm x 25,4 cm
Weight* Complete	347,5 kg	355,2 kg

\* Weight without mount and clevis





# Hotshot™ 70 HD and 100 HD

## Professional broadcast spreaders for year-round use

Meyer Hotshot spreaders are compact, easy to manoeuvre and built to handle extreme conditions. They are the perfect solution for keeping walkways clear of snow and ice. Each Hotshot model comes standard with **33 cm pneumatic snow tyres for easy movement. Wheel bearings/bushings are enclosed and axles feature serviceable, weatherproof gear boxes** to eliminate salt and grime build up. The **quick removal deflector shield prevents material from flying too far.**

### Other features:

- Extra-large 37 L and 51 L capacity
- Large, heavy duty Nylatron GS greaseless gears for superior durability
- Axle and wheel bearings/bushings provide self-lubrication with excellent wear and load carrying performance
- Standard see-through hopper cover keeps the elements out and material in
- Standard mesh screen helps break up large chunks of material to help eliminate clogging



### Hotshot Specifications

Model	Hotshot 70 HD	Hotshot 100 HD
Part Number	38180	38190
Capacity	36,8 L	51 L
Hopper	Poly	Poly
Frame	Stainless	Stainless
Spreading Width	3,7 m	5,5 m
Material	Sand, Salt, Seed and any Free Flowing Material	Sand, Salt, Seed and any Free Flowing Material





# Base Line 240 and 400

## Economical spreader for small- to medium-sized jobs

The easy-to-use Meyer Base Line 240 and 400 **tailgate spreaders** feature a **5 cm receiver hitch** so they easily attach to any SUV, truck, tractor or utility vehicle. The **direct-drive system links the motor directly to the auger, creating up to 75% more auger** power than non-direct drive set-ups. The **brush auger prevents rock salt from leaking out of the hopper throat.**

### Other features:

- 1/6 HP motor provides outstanding performance
- Motor's marine style electrical plug keeps water out to ensure consistent power flow
- Variable speed touchpad controller delivers a spread pattern up to 7,6 meters
- Integrated storage stand and motor guard



### BL Spreader Specifications

Model	BL240	BL400
Part Number	31100	36100
Capacity	105 L	178 L
Weight	44 kg	47 kg
Height	85,1 cm	106,7 cm
Width	68,6 cm	68,6 cm
Depth	76,2 cm	76,2 cm
Hopper	Poly	Poly
Operating System	1/6 HP (124 W) 12V Electric	1/6 HP (124 W) 12V Electric
Mounting Method	5 cm receiver hitch mount (std)	5 cm receiver hitch mount (std)
Vehicle Application	SUV, truck, tractor or utility vehicles	SUV, truck, tractor or utility vehicles





# Blaster™ 350S and 750RS

## Steady-flowing premium spreader

Meyer “S” series Blasters have been designed to systematically create a steady flow of material to the spinner. Each model comes standard with an **on-demand vibrator**, a **load-bearing baffle plate** and **brush auger** that reaches deep into the hopper. All of these features work together **to create a constant flow of material to the spinner providing reliable performance** in less than perfect conditions.

### Other features:

- ½ HP motor, the most powerful available
- One-touch illuminated in-cab controller includes on/off switch, blast mode and vibrate mode
- Brush auger prevents de-icing material from leaking out of the hopper throat
- Compatible with utility vehicles and larger trucks

### Blaster Specifications

Model	Blaster 350S mit Rüttler	Blaster 750RS mit Rüttler
Part Number	37000B	39010B
Capacity	184 L	362 L
Weight	84 kg	108,4 kg
Height	90 cm	113 cm
Width	61 cm	61 cm
Length	125 cm	125 cm
Hopper	Poly	Poly
Operating System	1/2 HP (373 W) 12V Electric	1/2 HP (373 W) 12V Electric
Material	Bagged 50/50 Rock Salt/Sand or Sand	Bagged 50/50 Rock Salt/Sand or Sand
Mounting Method	5 cm receiver (std); Cat. 1,3 point hitch (opt)	5 cm receiver (std); Cat. 1,3 point hitch (opt)
Vehicle Application	SUV, Light Truck	Larger utility vehicles





# Crossfire™ 6 and 8

## A material delivery system designed to save time and money

The Meyer Crossfire fits into a 1,82 m or 2,43 m truck bed. Its **electric-driven material conveyor system** is designed to efficiently deliver the proper amount of de-icing material where you need it. The **hopper screen prevents large chunks of material** from entering the hopper, then the inverted V design evenly routes the material to the auger drive. The **auger is driven by a heavy-duty ½ HP motor and gear box** that can easily be removed for cleaning. The **independently controlled spinner manages material output** to help reduce consumption and lets you spread the material where it's needed.

### Other features:

- DLX model includes an integrated pre-wet system in the side of the hopper
- Easy maintenance spinner assembly and full-length auger assembly require no tools
- Full width hopper reduces material spillage into the vehicle bed
- Rear cover protects auger motor from salt and debris
- Integrated work light
- Built-in tarpaulin hooks
- Recessed lifting pockets
- Upright storage capability





## Crossfire Specifications

Model	CF-6 Standard	CF-8 Standard	CF-6 Deluxe	CF-8 Deluxe
Part Number	64740	64742	66263	66265
Hopper Length	182 cm	243 cm	182 cm	243 cm
Capacity	1,1 m <sup>3</sup>	1,5 m <sup>3</sup>	1,1 m <sup>3</sup>	1,5 m <sup>3</sup>
Pre-Wet Capacity	N/A	N/A	662 L	757 L
Weight	190 kg	284 kg	190 kg	284 kg
Height	94 cm	94 cm	94 cm	94 cm
Width	178 cm	178 cm	178 cm	178 cm
Length	239 cm	300 cm	239 cm	300 cm
Width at Base	103 cm	118 cm	103 cm	118 cm
Hopper	234 cm	292 cm	234 cm	292 cm
Operating System	Auger 1/2 HP (373 W) Spinner 1/3 HP (249 W) 12V Electric	Auger 1/2 HP (373 W) Spinner 1/3 HP (249 W) 12V Electric	Auger 1/2 HP (373 W) Spinner 1/3 HP (249 W) 12V Electric	Auger 1/2 HP (373 W) Spinner 1/3 HP (249 W) 12V Electric
Mounting Method	Strap	Strap	Strap	Strap
Drive System	Auger	Auger	Auger	Auger

Model	CF-6 Standard EC*	CF-8 Standard EC*	CF-6 Deluxe EC*	CF-8 Deluxe EC*
Part Number	64740L	64742L	66264	66266
Hopper Length	182 cm	243 cm	182 cm	243 cm
Capacity	1,1 m <sup>3</sup>	1,5 m <sup>3</sup>	1,1 m <sup>3</sup>	1,5 m <sup>3</sup>
Pre-Wet Capacity	N/A	N/A	662 L	757 L
Weight	190 kg	284 kg	190 kg	284 kg
Height	94 cm	94 cm	94 cm	94 cm
Width	178 cm	178 cm	178 cm	178 cm
Length	239 cm	300 cm	239 cm	300 cm
Width at Base	103 cm	118 cm	103 cm	118 cm
Hopper	234 cm	292 cm	234 cm	292 cm
Operating System	Auger 1/2 HP (373 W) Spinner 1/3 HP (249 W) 12V Electric	Auger 1/2 HP (373 W) Spinner 1/3 HP (249 W) 12V Electric	Auger 1/2 HP (373 W) Spinner 1/3 HP (249 W) 12V Electric	Auger 1/2 HP (373 W) Spinner 1/3 HP (249 W) 12V Electric
Mounting Method	Strap	Strap	Strap	Strap
Drive System	Auger	Auger	Auger	Auger

\* EC models have an extended chute that is approximately 22,9 cm longer than a regular chute







Scan to discover Aebi Schmidt on YouTube.

Aebi Schmidt Holding AG  
Marketing and Communication

Technical data is subject to change.  
Illustrations are not binding.

Status 03/2021 Copyright © Aebi Schmidt Holding AG.  
All rights reserved. Errors and amendments excepted.

 **aebi schmidt**  
group

[www.aebi-schmidt.com](http://www.aebi-schmidt.com)