



KL-V

Snow plough



The KL-V is a variable wedge snow plough, which is available in different plough forms and meets a multitude of applications. The KLV-series offers wedge shape, V-shape and one-sided snow ploughs, and is ideal for clearing inner-city areas, car parks and roads, along with access to buildings and other infrastructure. The KL-V is designed for mounting on Unimogs, trucks, tractors or wheel loaders.

Highlights

- **Flexible plough form**
- **Two continuously variable, simultaneously pivoting plough shares**
- **Override security system**

Your benefits

- **Flexibility:** Use as wedge-shaped, V-shaped and one-sided snow plough.
- **Versatility:** Can be used for a wide range of applications.
- **Performance:** Suitable for clearing difficult and hard-to-reach areas such as car parks.

We know how important it is that your machines and equipment are always ready to deploy. **Get in touch with us** about our range of tailored services and original spare parts.



Performance features

Plough blade

The KL-V series ploughs consist of two stepless, simultaneously pivoting blade wings with synchronous control, and can be used as wedge-shaped, V-shaped and one-sided snow ploughs, suitable for various clearing tasks. The box design of the ploughs ensures high stability.

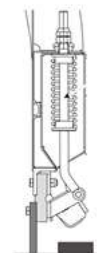
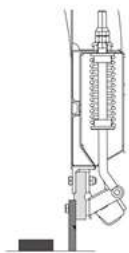
Rotating point between ploughshares is equipped with poliacetal (POM) bushings, which perfectly helps to reduce noise and friction and provides shock absorption.

The KL-V ploughs are designed to achieve optimum snow ejection rates even with different snow heights. This makes them particularly suitable for clearing difficult areas such as car parks, narrow roads in city centres and the targeted clearing of busy road junctions.



Override security system

Each ploughshare is equipped with an override security system. A shock absorber rail between the cutting edge and plough blade, plus a pendulum device with damping element, reduces noise and delivers very smooth running characteristics. The PU locking pin closes the gap between the cutting edge of the right and left ploughshare.



Cutting edges

Steel cutting edge (S)

A multi-purpose, cost optimised solution for aggressive clearing of hard and/or compact snow. Steel cutting edges are resistant to bending and twisting, giving a clean result.

Combi cutting edge (size 36 and 50) (C36 / C50)

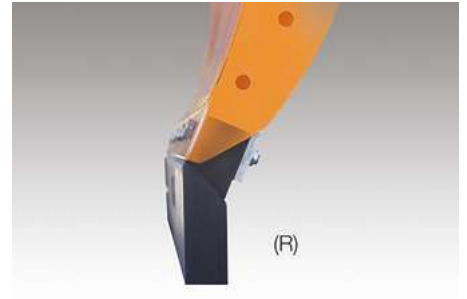
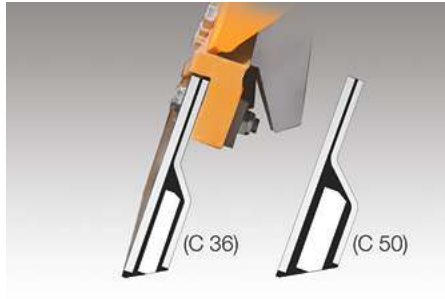
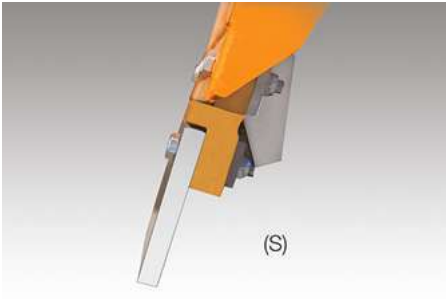
A more durable cutting edge made of steel, rubber and ceramic. This cutting edge is meant for aggressive snow clearing and can be a good alternative if the steel cutting edge is wearing out too fast. The combination of materials ensures noise and vibration reduction.

Rubber cutting edge (R)

A good solution for use on innercity roads and speciality properties like parking lots. Due to the flexible and elastic characteristics of rubber, it glides smoothly over the surface. A rubber cutting edge is especially efficient when clearing snow slush.

GK 5 cutting edge (GK 7)

A GK cutting edge allows for more efficient snow slush clearing with longer service life and less friction. This cutting edge is made of steel, rubber and corundum and is therefore more aggressive than a rubber cutting edge.



Lifting and angling device

The user-friendly, three-link lifting device guarantees tension-free lifting, while adjustable top links ensure optimum roadway adjustment. As an option, a hydraulic slope compensation system can be fitted to align the snow plough in a horizontal position, perfect for clearing pavements with an inclined vehicle. Generously dimensioned hydraulic cylinders with overload protection allow infinitely variable adjustment.

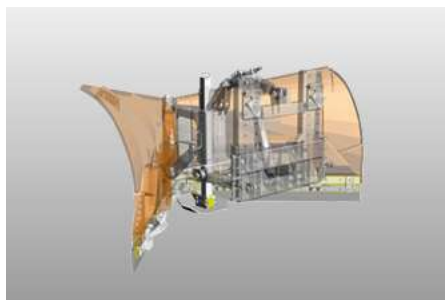
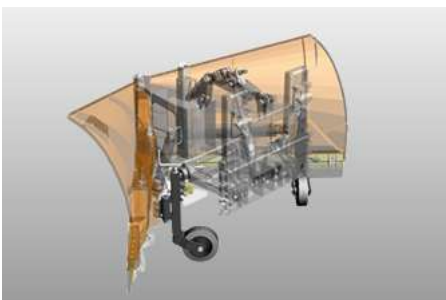


Hydraulic system

- suitable for vehicle hydraulics with three control valves for operation of the snow plough
- four control valves for comfortable angling (synchronous control)
- five control valves with hydraulic compensation of lateral inclination
- optionally additional valve to reduce 2 control valves

Working support devices

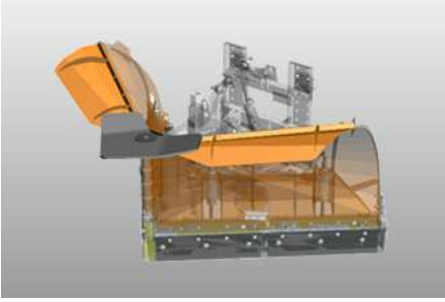
Castor wheels or a sliding plate extend the service life of the cutting edges and allow obstacles to be driven over more smoothly.



Snow deflector

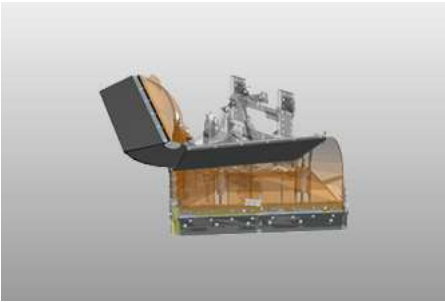
A snow deflector prevents poor visibility due to snow swirling up to the wind- screen of the vehicle. The shield directs the air stream along with the snow dust to the side. There are two variants to choose from:

Steel snow deflector



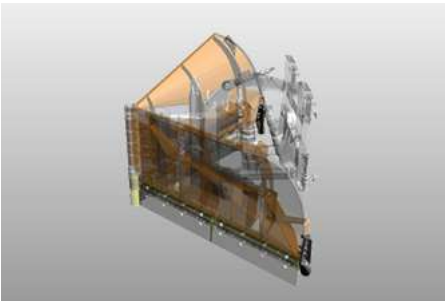
Rubber snow deflector

Rubber protection is used mainly during slow clearing of wet and heavy snow. Thanks to its great flexibility, the splash guard is not easily damaged. It is simple and cost effective option.



Kerb deflector

Kerb deflectors prevent damage to the plough body when working on solid obstructions, such as the walls of buildings.



Mounting

For optimum positioning of the snow plough on different vehicles, the mounting plate is height adjustable and can be attached to vehicle plates size 3/5. A wide range of mounting adaptations for wheel loader and tractors are available.



Options

- Warning marks and safety devices
- Plough lighting LED

Gallery



Related products

Tellefsdal VPL

Snow plough



Tellefsdal U-LS

Snow plough



Tellefsdal U-H2

Snow plough





Trust in our many years of uniquely diverse experience. **Get in touch with us.** We'll find the right solution for your specific challenge.

Technical data

	KL-V 28	KL-V 32	KL-V 36
Dimensions			
Plough height centre	870 mm	870 mm	870 mm
Plough height right and left	1,110 mm	1,110 mm	1,110 mm
Length at cutting edge	2,900 mm	3,300 mm	3,700 mm
Clearing width	2,470 mm at 32° 2,070 mm V-shaped plough at 45° 2,060 mm wedge-shaped plough at 45° 2,070 mm one-sided plough at 45°	2,810 mm at 32° 2,360 mm V-shaped plough at 45° 2,340 mm wedge-shaped plough at 45° 2,350 mm one-sided plough at 45°	3,150 mm at 32° 2,640 mm V-shaped plough at 45° 2,620 mm wedge-shaped plough at 45° 2,630 mm one-sided plough at 45°
Centroidal distance to coupler plane	510 mm	480 mm	460 mm
Weights			
Approx. weight with rubber cutting edges	630 kg	660 kg	685 kg



© Aebi Schmidt Group
www.aebi-schmidt.com

Aebi Schmidt Holding AG
CH-8050 Zurich, Switzerland

All rights reserved. Technical data is subject to change.
Illustrations are not binding. Errors and amendments excepted.

Document created on 28 FEB 2024

